



**Strongest Built  
Australian Made  
Lifetime Warranty**

**PN: NBI61SY  
MI61SY**



# **Fitting Guide & Owners Manual**

**IVECO DAILY  
50C E6 01/21 ON**

76MM MIDI BAR & 76mm NUDGE BAR  
VEHICLE FRONTAL PROTECTION SYSTEM (VFPS)  
FOR AIR BAG & ADR COMPLIANT VEHICLES

# Index

---

## **Pages 3-5**

ECB's Benefits

Product Care

## **Pages 6-7**

Stage 1 - Vehicle Preparation

Stage 2 to3 - Inner Guard Removal

## **Pages 8-9**

Stage 4 to 5 - Remove Bumper

Stage 6 - Disconnect Washer Hose/ Sonar Harness

Stage 7 - Remove Bumper

Stage 8 - Remove Bumper Supports

Stage 9 - Fit ECB Steel Mounts

Stage 10 - Trim Inner Bumper

Stage 11 - Refit Bumper

Stage 12 - Fit Protection Bar

## **Pages 10-11**

Stage 13 - Trim Lower Infill Panels

Stage 14 - Test Drive

Final Checks & Installation Kit

## **Pages 12-13**

Finished Product

Warranty Registration

## **Pages 14-15**

Notes

# The Features of ECB

---

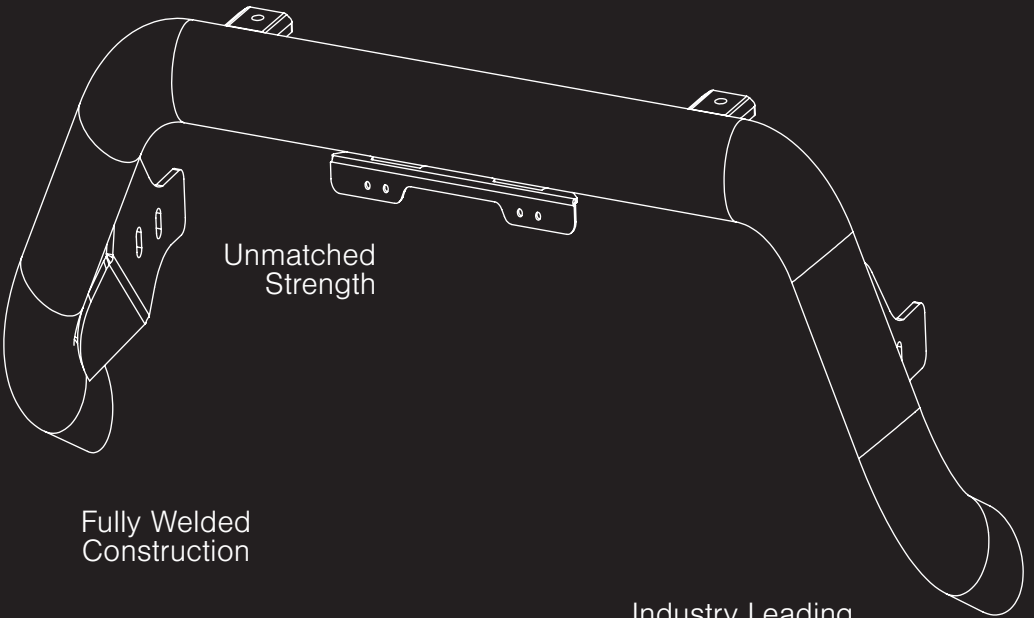
Rust Free

Hi-Tensile Alloy

Unmatched  
Strength

Fully Welded  
Construction

Industry Leading  
Metal Thickness



# ECB's Benefits

---

## **Built to Perform - Not to a Price**

ECB are proud to claim that their channels are not jigsaw puzzles that are bolted together, or even multiple sections welded together. Where any welding is required, it is done to the highest standards by qualified welders, not machines.

## **Anti-Corrosive Nature of Alloy**

The composition of ECB's alloy has a very high resistance to corrosion. Rust not only looks unappealing but greatly reduces the strength of the metal. Rust can and will weaken the structural integrity of a steel bullbar effectively rendering it useless over time.

## **Australian Made**

Established in 1971, we utilise decades of experience designing, engineering and building products in Australia to suit Australian conditions. We can ensure the best quality controls and help support the local economy and employ over 90 proud Australians.

## **Weight Saving Benefits**

An ECB alloy bullbar is typically half the weight of a steel bullbar. Unnecessary suspension upgrades are not required. The reduced weight also contributes to increased fuel economy and less wear and tear on tyres, suspension and braking components.

## **Welds That Work**

ECB uses only the strongest welds and welding techniques to ensure every product is as structurally sound as possible. MIG (Metal Inert Gas) welding techniques are employed ensuring the welds are as thick as the thickest section of alloy's being joined together.

## **Lifetime Warranty**

ECB provide a lifetime warranty and consumer guarantee on all of our manufactured products. This guarantee highlights the confidence in our ability and provides complete peace of mind for your purchase for the lifetime you own your vehicle.

# Product Care

---

## Polished Products

Being a premium mirror polished finish, regular maintenance will be required to keep that iconic ECB shine. We recommend using our own brand of Aluminium Polish. This formula has been tried and tested and in our opinion is the world's best standard.

**Directions:** Apply a small quantity of Aluminium Polish to a clean soft cloth and rub the metal surface. The longer the rubbing the brighter the surface becomes. Wipe off Aluminium Polish with clean soft cloth. Also suitable for motorised buffing machines. **Note: There are more specific details on the polish bottle. Please read before use.**

## Powdercoated Products

Our powdercoated finishes are very low maintenance. In fact there is actually very little you will ever need to do for this product. Just clean it as you would your car and it will stay looking good as new.

## ECB Aluminium Polish

When you're looking for that showroom finish look for your polished automotive products, you can depend on the no compromise quality of East Coast Bullbars Aluminium Polish. This specifically designed product is the best polish available and we guarantee that this \$#!+ works. Within our decades of manufacturing polished alloy products we have trialed a large range of different polishes on the market and believe without a doubt that nothing beats the finish quality of East Coast Bullbars Aluminium Polish.

East Coast Bullbars Aluminium Polish is excellent for use by hand and is ideal for polished bullbars, nudge bar and stainless steel products. This polish will clean, polish and protect your product from the elements whilst bringing your products back to that showroom finish look.



# MI61SY, NBI61SY

---

## Stage 1

- Test drive vehicle to ensure all driver assists are correctly working and to gauge effectiveness. Park on a flat level surface.
- Apply parking brake and lift bonnet.
- Unwrap ECB Protection bar and disconnect mounts. Discard bolts.
- Ensure these instructions are left with the vehicle owner / operator.



---

## Stage 2

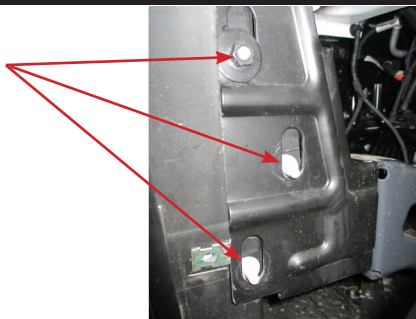
- Release three (3) 8mm fasteners (per side) and remove the inner wheel arch splash guards from each side of the vehicle.



---

## Stage 3

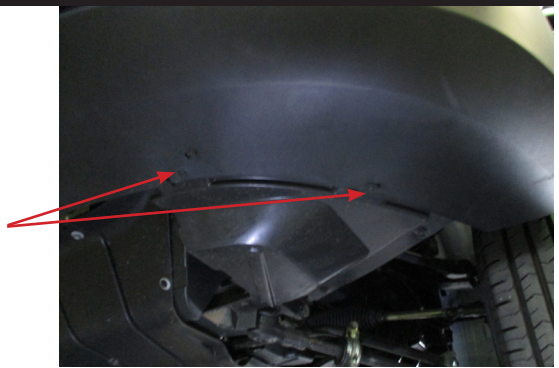
- Release three (3) 13mm head nuts under the wheel arch (per side) fastening the bumper bar reinforcing panel to the chassis bracket.



# Iveco Daily C50 E6 01/21 on

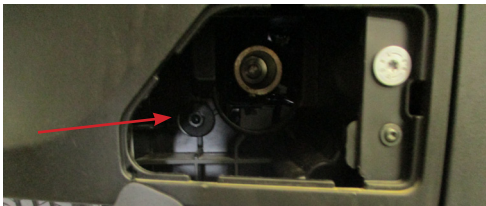
## Stage 4

- From underside of outer bumper, remove two (2) 8mm head screws (per side).



## Stage 5

- Release the caps on front bumper bar covering bumper fasteners.
- Release the three (3) nuts (per side) fastening the bumper bar to the chassis.



## Stage 6

- Disconnect fog lights and head light washer hoses (if fitted).
- Disconnect sonar.



# MI61SY, NBI61SY

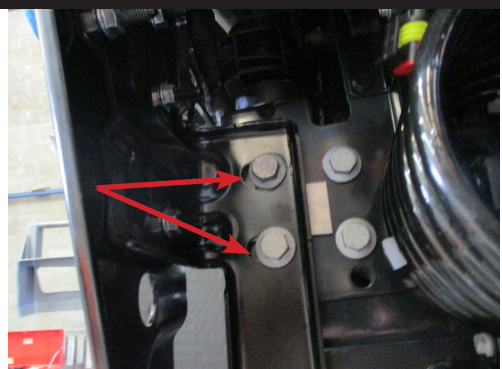
## Stage 7

- Remove bumper from vehicle.



## Stage 8

- Remove the bumper support mount two (2) front 16mm head bolts (per side) from the chassis rail. (P/S shown)



## Stage 9

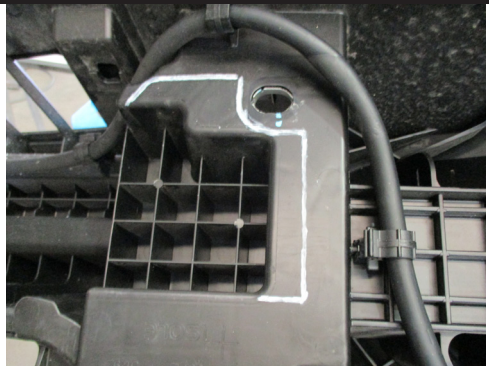
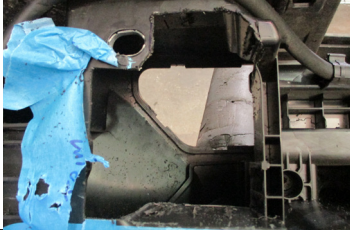
- Fit ECB steel mounting brackets along with bumper support brackets (supplied).
- For driver side use two (2) M12 x 1.75 x 70mm bolts, flat washers and spring washers (supplied).
- For passenger side use two (2) M12 x 1.75 x 40mm bolts, flat washers and spring washers (supplied).
- On underside of mount use two (2) M10 x 1.5 x 35mm bolts, flat washers, spring washers and M10 x 1.5 nuts (supplied).
- Align mounts and tighten all bolts.



# Iveco Daily C50 E6 01/21 on

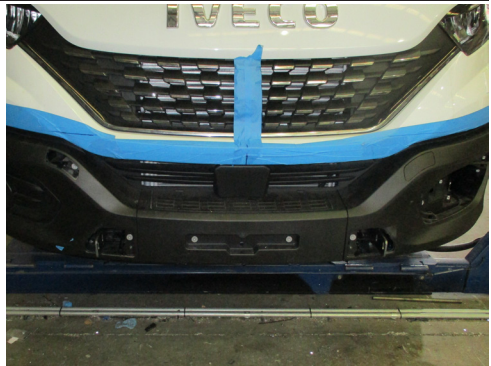
## Stage 10

- Trim rear of bumper area so mounts are able to protrude through bumper.
- See Photo for trim area of bumper



## Stage 11

- Refit bumper in reverse as per reverse of steps 2 to 7.



## Stage 12

- Fit protection bar to steel mounts, using two (2) M10 x 1.5 x 40mm bolts, spring washer, flat washer and M10 x 1.5 nut (per side) (supplied).
- For rear hole use one (1) M10 x 1.5 nut and washer on wire (supplied).
- Align protection bar with vehicle and tighten all bolts.
- Check fit tow hook to ensure correct fitment.



# MI61SY, NBI61SY

---

## Stage 13

- Trim lower covers and refit around mounting brackets.



---

## Stage 14

- Install number plate if fitted to front of lower cross bar.
- Test drive vehicle to ensure all safety features are working correctly.

# Final Checks & Installation Kit

---

## Ensure Number Plate is Clearly Visible

Note: When fitting/refitting the licence plate to the vehicle, ensure there is no obstruction to licence plate vision in accordance with local authorities. If required relocate licence plate to an alternate location.

## Further VFPS Notes

1. Do not attach VFPS to the vehicle using anchorages not intended for this purpose (e.g. engine mounting bolts).
2. Do not use this product for any vehicle make or model, other than those specified by the VFPS manufacturer.
3. Do not remove the plaque or label from the VFPS.
4. Do not modify the structure of the VFPS in any way.
5. No accessory or fitment should project forward of the VFPS forward profile.
6. **Ensure these instructions are left with the vehicle owner and/or operator.**

## Important Information

Periodically check bolts and nuts for correct tightness, especially if traveling on rough roads.

## Installation Kit

1 - Pair ECB steel mounting brackets	4 - M10 x 1.5 x 40mm bolts
1 - Tow pin (M30 x 390mm)	4 - M10 x 1.5 x 35mm bolts
2 - M12 x 1.75 x 75mm Set Screws	14- M10 flat washers
2 - M12 x 1.75 x 40mm bolts	8 - M10 spring washers
4 - M12 flat washers	6 - M10 x 1.5 nuts
4 - M12 spring washers	2 - M10 x 1.5 nut & washer on 300mm wire

# Finished Product

---



# Warranty Registration

---

## Contact Details

Name: \_\_\_\_\_

Address: \_\_\_\_\_

Product: **MI61SY, NBI61SY** (Please Circle)

Email: \_\_\_\_\_

Phone: \_\_\_\_\_

Work Order Number: \_\_\_\_\_

You can find this on the silver label  
of your ECB product.

By submitting this registration you automatically subscribe to ECB's mail outs. You  
can unsubscribe at any time.

## Register Online

For online registration please go online to [www.ecb.com.au/warranty-registration](http://www.ecb.com.au/warranty-registration)  
If you have any questions please contact our national office on 1800 069 145 or  
[www.ecb.com.au](http://www.ecb.com.au).



**PN: MI61SY, NBI61SY**  
**Please post to PO Box 122,**  
**Margate QLD 4019**

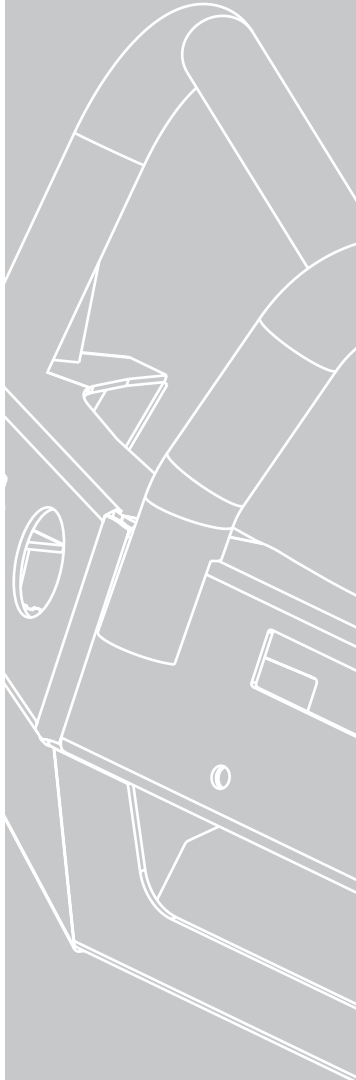
\_\_\_\_\_

This image shows a blank sheet of white paper with horizontal ruling lines. The lines are evenly spaced and extend across the width of the page. There are no margins, text, or other markings on the paper.

---

---

REPLACES: N/A  
REVISED: 25.04.22



1800 069 145  
[www.ecb.com.au](http://www.ecb.com.au)

# **Strongest Built Australian Made Lifetime Warranty**

29 Snook St, Clontarf QLD 4019  
PO Box 122, Margate QLD 4019